

Tachometer & Hour Meter



Introduction:

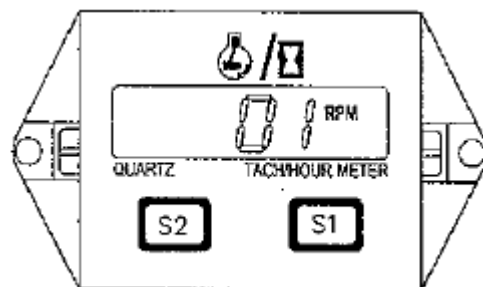
The Engine Monitor is a self-powered LCD Hour meter, Tachometer and Maintenance Meter. An internal lithium battery supplies power for the monitor. A wire wrapped around a spark plug cable on the engine provides both a tachometer signal and an indication of running time. The maintenance meter is used to alert maintenance personnel that a time interval has expired and maintenance should be performed. Before changing any settings on the Engine Monitor, ensure the engine is off.

Installation:

Unpack and attach the unit in a location where it can be easily read. Wrap 3 or 4 turns of wire around the engine's spark plug cable. The LCD will display the accumulated hours on the hour meter and the HOURS icon will show.

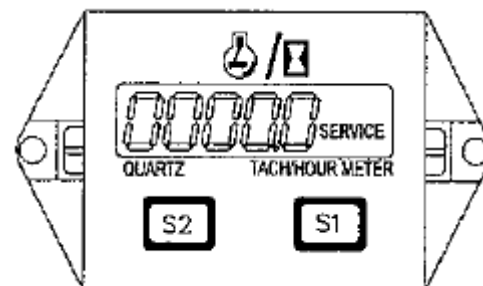
Setting The Tachometer (Spark plug firing revolution):

Press and hold the S1 button for 4 seconds. The LCD will display 01 (spark plug fires twice per revolution), 02 (once per revolution), 03 (every other revolution) or 04 (hours only, will not display RPM). Once you find your desired spark plug firing pattern, release the S1 button. The LCD will blink for 8 to 10 seconds and return to total hour meter mode. The default is 02 (once per revolution).



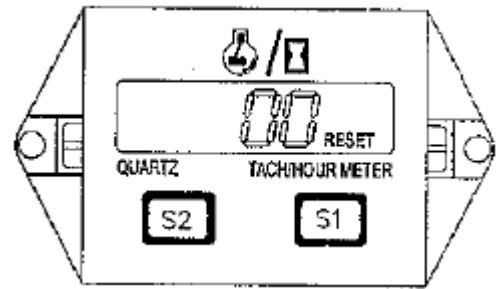
Setting The Maintenance Interval Timer:

Press and hold the S2 button for 4 seconds. The right most digit on the LCD will flash and the SERVICE icon will be displayed. Pressing and holding the S1 button will cause the flashing digit to automatically increment. When the desired number has been reached release the S1 button and press the S2 button for 1 second to move to the next digit. Repeat the above steps until the service time interval has been entered. After 14-16 seconds with no buttons pressed the LCD display will return to total hour's mode.



Activating The Maintenance Interval Timer:

Press and hold the S1 and S2 buttons simultaneously for 4 seconds. The two digits will increment to 09 seconds and then return to total hour's mode. When the engine is running and the maintenance time has reached zero, the service icon will come on.

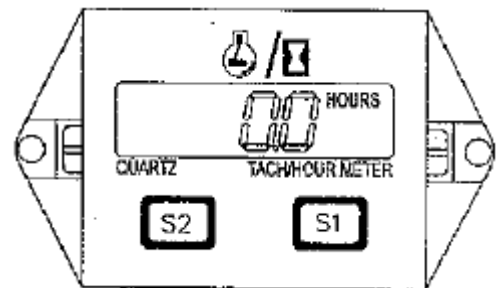


Viewing Maintenance Interval:

Press and hold the S2 button for 4 seconds to view remaining time of the maintenance interval. To continue current maintenance, do nothing. If you would like to start a new maintenance interval repeat steps 4 and 5 again. Each time you want to view the remaining time of your maintenance press and holds S2.

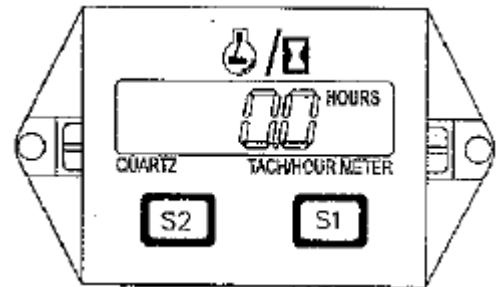
Resetting The Service Icon:

Press and hold the S1 and S2 buttons for 20 seconds. The service icon will shut off. The maintenance time will automatically default to the time previously programmed.



To Display Hours Only:

Press and hold the S1 button until 04 is displayed. Release the S1 button and the display returns to total hours after 8-10 seconds. When the engine is running the display will show hours only (no RPM), and the Hour icon will blink.



To Reset Total Hours and Maintenance Time:

Press and hold the S1 button until 05 is displayed. Release the S1 button and after 8 seconds the display will return to total hours. Press and hold S1 and S2 simultaneously for 20 seconds and the meter will perform a total reset.

