

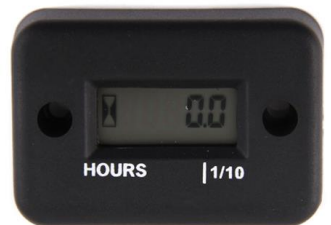
Digital Hour Meter



Introduction:

This Hour Meter automatically monitors how much time your motor spends running. It's not necessary to turn it on, off, or reset it. Once the motor is started the Hour meter records the running time in hours and tenths of a hour. When the motor is running the symbol on the left of the LCD display will flash.

It's recommended to keep a maintenance log for recording the time when performing maintenance. This way you'll never forget when you last changed the oil, filter or performed other maintenance or modification.



Installation:

1. Wrap the included pick-up wire around the spark plug wire five times. Start wrapping the pick-up wire about 4cm from the end of spark plug boot. Use the included zip tie to secure the pick-up wire wrapping as shown in the photo.
2. Insert the other end of the pick-up wire into the rear of the meter by pressing firmly into the groove.
3. Start the motor to make sure the meter is picking up the ignition signal. If it is this will activate the timer on the meter and the icon on the left of the LCD will flash. You'll have to wait at least 6 minutes for the timer to increment the timer display (1/10th of an hour). If it is not picking up the ignition signal slide the pick-up wrap closer to the spark plug boot.



If the meter is successfully picking up the spark signal, run and zip tie the pick-up wire along existing cabling making sure it does not make contact with the engine.

Mounting the meter:

Depending on the installation location the meter can be mounted using the supplied screws, padded double sided tape or nylon zip ties.